

# save<sup>E</sup><sup>®</sup>

Advanced Phase Change Materials

## PLUSS<sup>®</sup>

TECHNOLOGY FOR  
A BETTER WORLD

Phase Change Materials For  
Refrigeration Application

# CHEST FREEZER WITH PCM

## Solution for Ice cream freezer



PCM pouch wrapped around the evaporator coil



**Dimension of the Pouch:** 500X157X17mm

**Wt. of the pouch:** 800gms

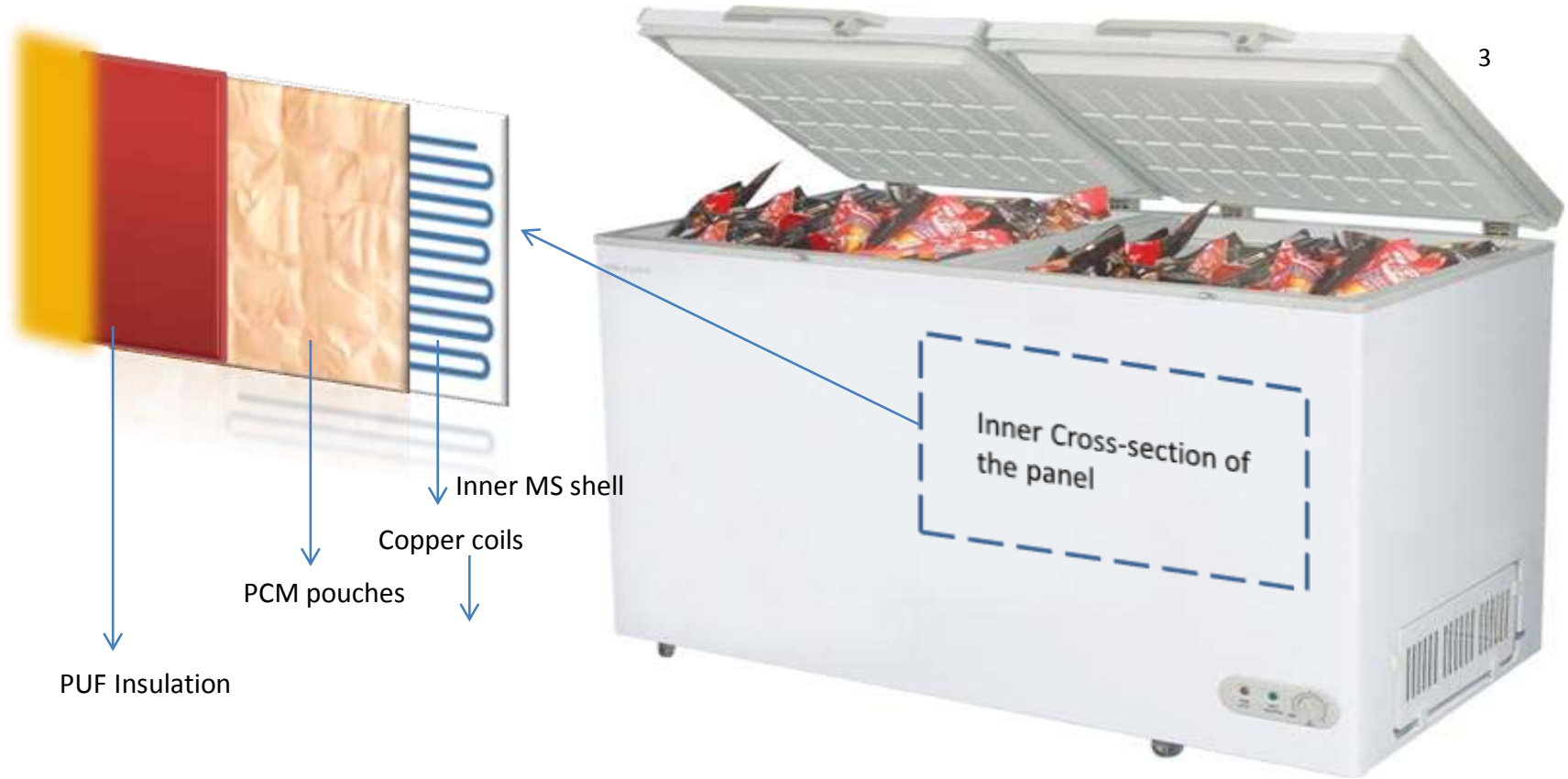
**Type:** - Nylon multi layered

- Four segmented(Each segment 200gms)

**PCM Used:** Minus 23 deg C and Minus 10 degC

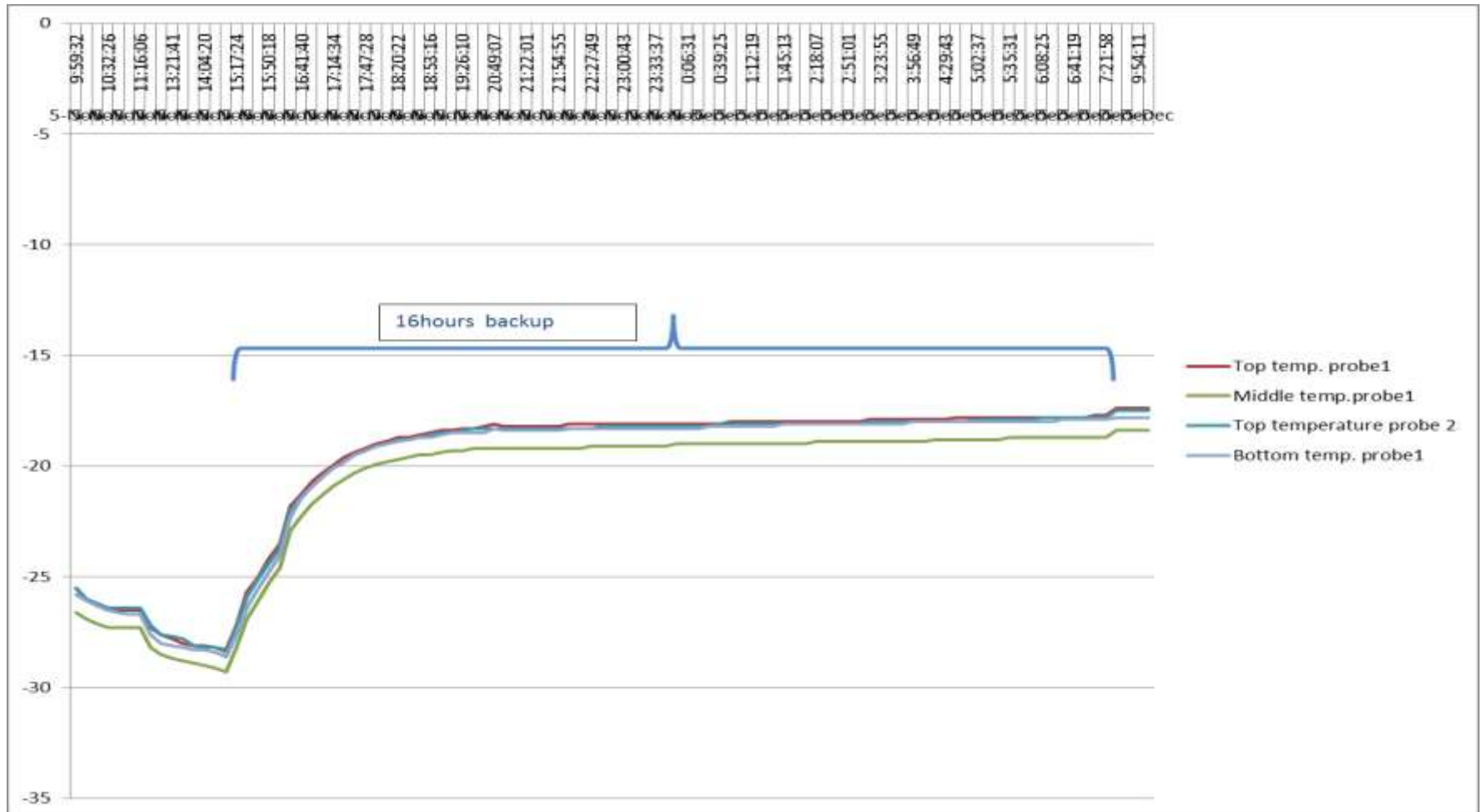
# CHEST FREEZER WITH PCM

## Solution for Ice cream freezer





# RESULT ON A 1100 LTR. FREEZER



# COMPARISON OVER GLYCOL

For a 1100 Ltr Chest Freezer Machine – Product Ice Cream



Inner cooling Chamber

## PCM

Qty – 70 Litres

Modular in design

Non-corrosive encapsulation

Protected with encapsulation

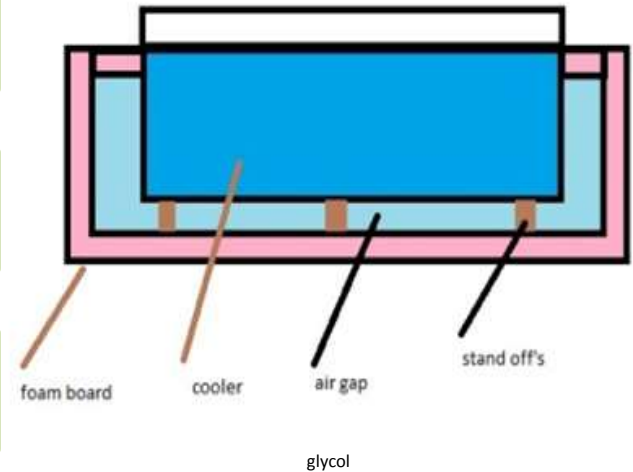
## GLYCOL

Qty – 200 Lites

Flooded

Corrosive

Susceptible to damage during transport and handling



# FREEZER ON WHEELS WITH PCM

## Our PCM application on different types of FOW

### Evaporator in direct contact with PCM

- Non Metallic Body.
- Quick freezing time.
- 10 – 12 hrs of backup

### PCM encapsulated in pouches on evaporator

- Metallic Body.
- 10 – 12 hrs of backup



Plastic Moulded FOW



Plastic Moulded FOW